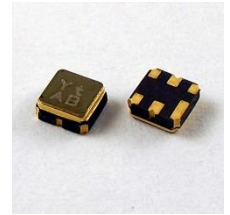


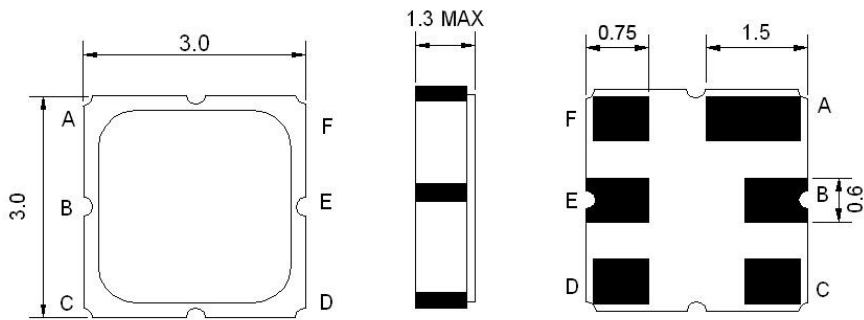
- Low-loss RF filter for mobile systems
- Low amplitude ripple
- No matching network required for operation at 50Ω
- Ceramic package for Surface Mounted Technology (SMT)
- Lead-free production and RoHS compliant



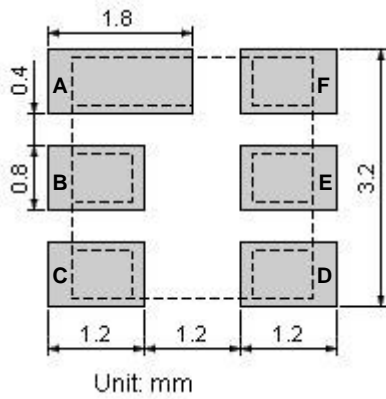
MAXIMUM RATING				
PARAMETERS DESCRIPTION	UNIT	MINIMUM	TYPICAL	MAXIMUM
Operating Temperature Range	°C	-40	-	+85
Storage Temperature Range	°C	-40	-	+85
Maximum DC Voltage	V	-	-	6
Maximum Input Power	dBm	-	-	10
Source Impedance	Ω	-	50	-
Load Impedance	Ω	-	50	-
Length x Width	mm <sup>2</sup>	-	3.0 x 3.0	-
Height	mm	-	-	1.3

ELECTRICAL SPECIFICATION				
PARAMETERS DESCRIPTION	UNIT	MINIMUM	TYPICAL	MAXIMUM
Center Frequency (Fo)	MHz	-	921	-
Insertion Loss within 914.0 ~ 928.0 MHz	dB	-	1.6	2.5
Amplitude Ripple (p-p) within 914.0 ~ 928.0 MHz	dB	-	0.6	1.2
<b>Absolute Attenuation:</b>				
0.300 ~ 800.00 MHz	dB	45	52	
800.0 ~ 885.00 MHz	dB	40	50	
960.0 ~ 1020.00 MHz	dB	40	50	
1020.0 ~ 2000.00 MHz	dB	45	50	
Input VSWR within 914.0 ~ 928.0 MHz				2.0:1
Output VSWR within 914.0 ~ 928.0 MHz				2.0:1

## Package Dimensions

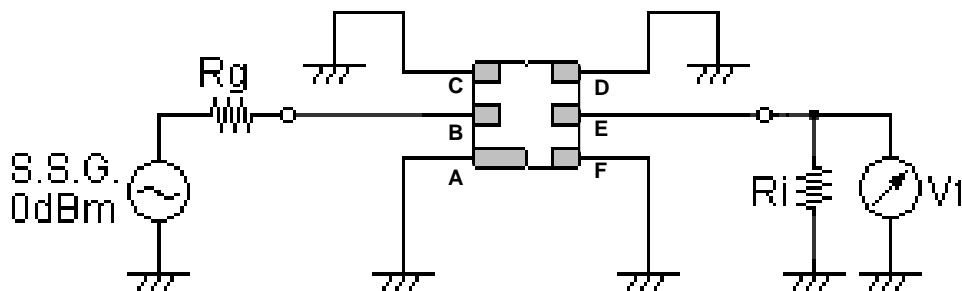


### SOLDER PATTERN



Pin Description	
A, C, D, F	Ground
B	Input
E	Output

## Testing Environment



Source Impedance: 50  $\Omega$

Load Impedance: 50  $\Omega$

**Frequency Characteristics**

**Frequency Response**

